

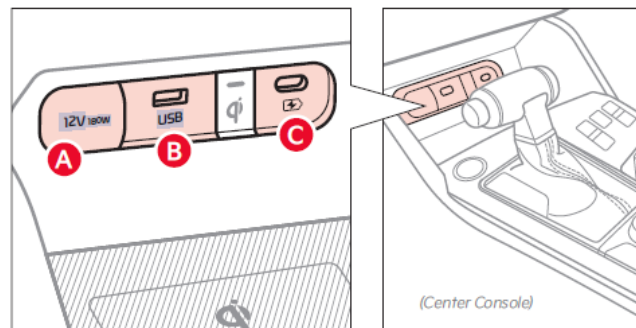


TO: Dealer Sales & Service Team
SUBJECT: IQS Quick Tip #21 – USB Device Ports
DATE: February 2023

Select 2023 model year Kia vehicles will have two types of USB ports: a **Multimedia USB port** and a **Device-Charging USB port**. Some vehicles are equipped with two **USB-A** or **USB-C** ports and some vehicles are equipped with a 12V power outlet.

- **(A) Power Outlet:** This port is labeled 12V and can be used to provide power for compatible devices that require 12-volts.
- **(B) Multimedia USB Port:** This port is labeled USB and can be used to connect a compatible device to Apple® CarPlay® or Android Auto™ or a USB device to play music or perform infotainment software updates.
- **(C) Device-Charging USB Port:** This port is labeled with a graphic of a charging battery and is used to charge compatible devices only.

Multimedia USB Port



Power Outlet

USB-C Charger

Note:

1. Infotainment systems that support wireless Apple® CarPlay® will not support wired Apple® CarPlay®.
2. These ports will only work when the vehicle is on or in accessory mode.
3. Device-Charging USB Ports charge devices faster than the Multimedia USB Port.
4. Always use the USB charging cable that has been certified by the device manufacturer. Use of an aftermarket cable is not recommended, as it may impact functionality.
5. Location of the ports may vary depending on the vehicle.



Kia advises customers to update the head unit to the latest software by visiting the website <https://update.kia.com/US/EN/Main>

Multimedia USB & USB Charger Ports Video:

<https://www.youtube.com/watch?v=9Cakwuj1fxE>

Thank you for your attention and focus to explain all connectivity features to customers during the delivery process.

Sincerely,

**Ownership Experience Team
Kia America**

For additional resources and other information related to potentially difficult to understand features, visit the IQS learning center within the Product Presentation Center.

<https://kiappc.com/kia-learning-center/kia-quality-center/tips-resources/>

Legal Disclaimers

Android Auto™: Vehicle user interface is a product of Google and its terms and privacy statements apply. Requires the Android Auto™ app on Google Play™ store and an Android™ compatible device running Android™ 5.0 Lollipop or higher. Data plan rates apply. Android™, Android Auto™, and Google Play™ are trademarks of Google LLC or its affiliates.

Apple CarPlay®: Apple® and Apple CarPlay® are trademarks of Apple, Inc., registered in the U.S. and other countries. Apple CarPlay® runs on your smartphone cellular data service. Normal data rates will apply.